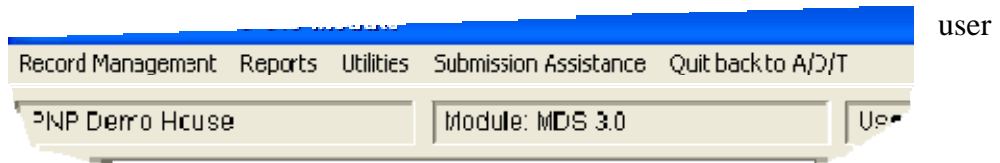


Submission Assistance: New MDS 3.0 Menu option

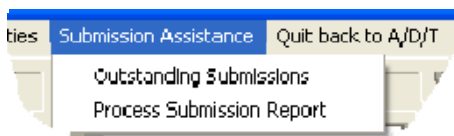
A new menu item now exists in you MDS 3.0 Module

The option allows the user to read in the validation report.



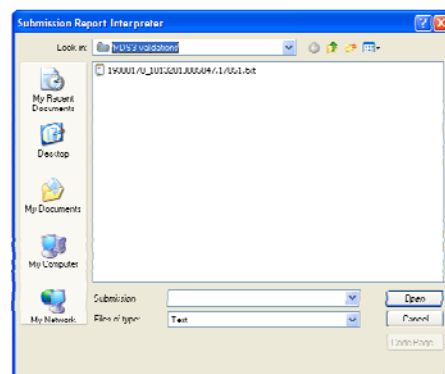
Once the report has been “read in”, the system will show the results of the validation for each assessment in a given submitted zip file.

To process (read in) the validation report, set up a file folder named something like *MDS30 Validations* on you facility’s network – preferably on a Drive that is backed-up. Download the validation and place it in the file folder.



Under Submission Assistance select **Process Submission report**. You will then see the following screen:

Please find the file folder in which you placed the validation report. Then click on the validation report select **OPEN**.



The Report will provide the following information:

Processing of CMS Submission Report

Submission Date/Time: 10/13/2010 08:50:47 AM
Processing Completion Date/Time: 10/13/2010 08:51:57 AM
Submission ID: 17851

Name	File Submitted	Production/Test Flag	Accepted/Rejected
	mds30_20101013_0009.xml	PRODUCTION	ACCEPTED
	mds30_20101013_0010.xml	PRODUCTION	ACCEPTED
	mds30_20101013_0012.xml	PRODUCTION	ACCEPTED
	mds30_20101013_0011.xml	PRODUCTION	ACCEPTED

You may only access this report once and then the system marks it as having been opened and read so you may wish to print this.

Next, go to the **OUTSTANDING SUBMISSIONS** menu option.

This will show all assessments that you have exported to a file. Remove the assessments which have been accepted. In this way you may keep track of assessments which have been rejected and need to be “unsubmitted”, fixed, and submitted.